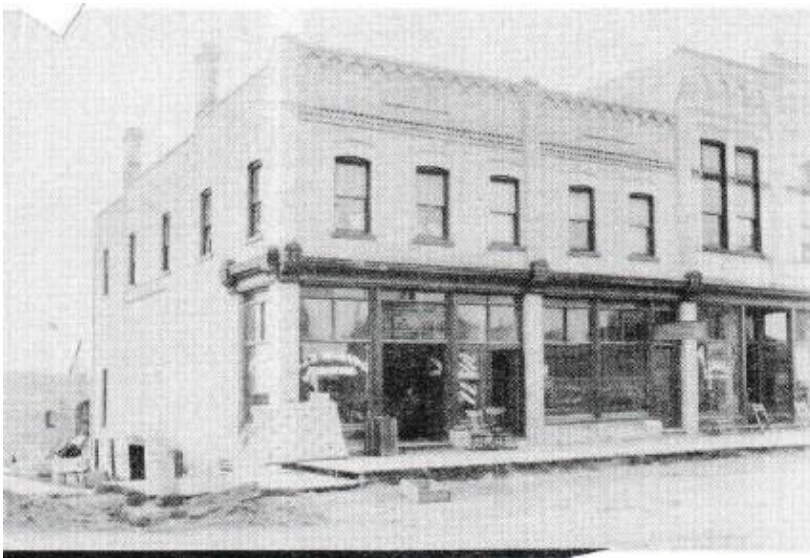


THE JOHNSON BLOCK

The Johnson Block was built on the east end and south side of the Crescent. One of the first businesses was a Furniture and Undertaking business. The Hearse used to park in the basement area. As well, the building was a Jail, and a Jail Cell still remains. The building housed the Canadian Legion from 1930s – 1949. It sustained fire damage in the 1960's and was later restored into apartments. Over the years it housed many businesses on the ground floor. Most of the building was torn down in 1986. Numerous businesses have occupied the area that remains. Barb Murphy and her business is the newest occupant of this space.



4 Crescent Avenue



1989 Photo